

Fig. 1. J. H. Han and C. G. Kim

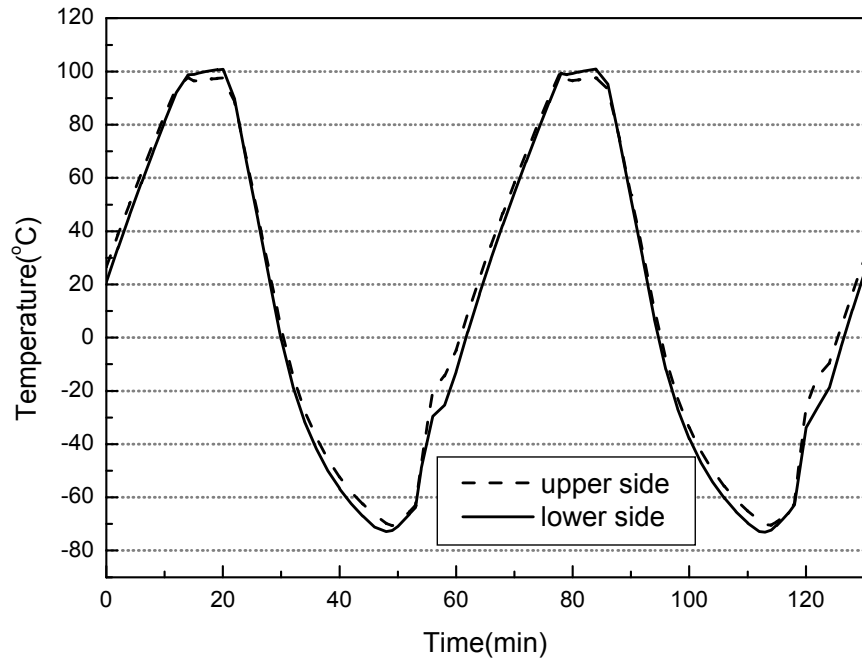


Fig. 2. J. H. Han and C. G. Kim

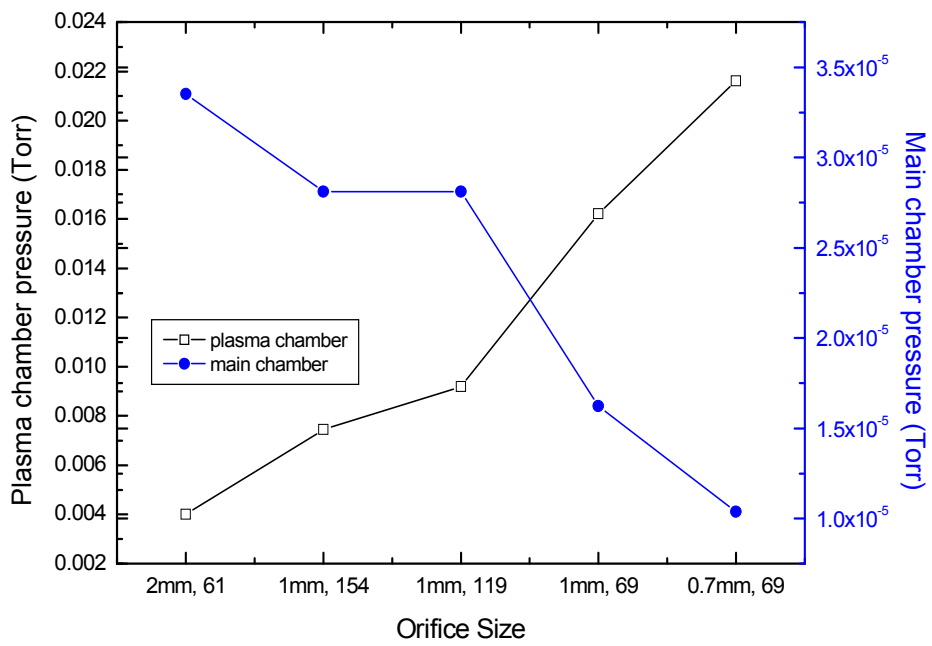


Fig. 3. J. H. Han and C. G. Kim

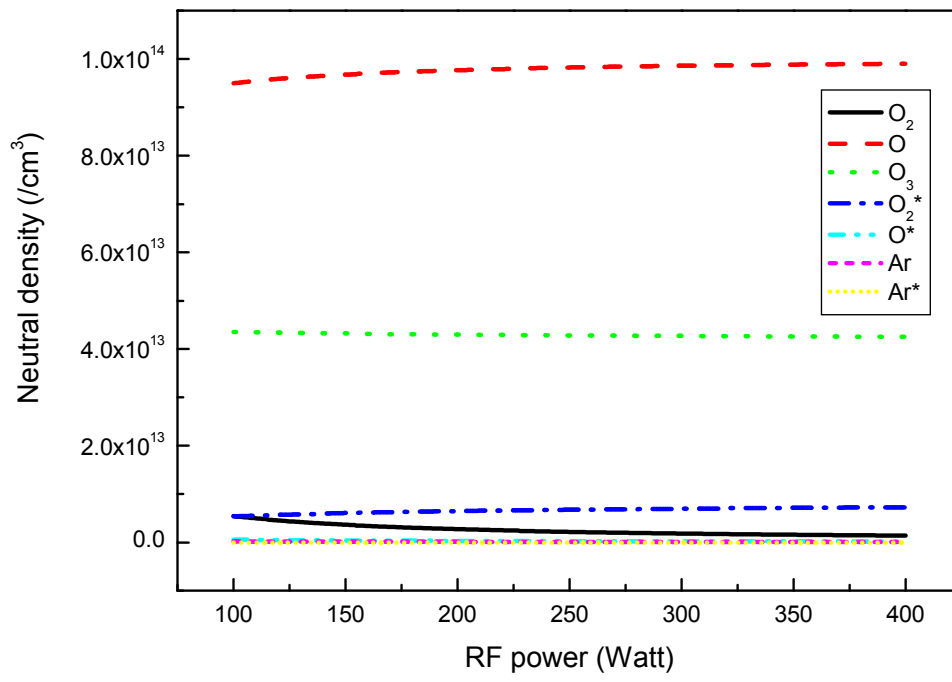


Fig. 4. J. H. Han and C. G. Kim

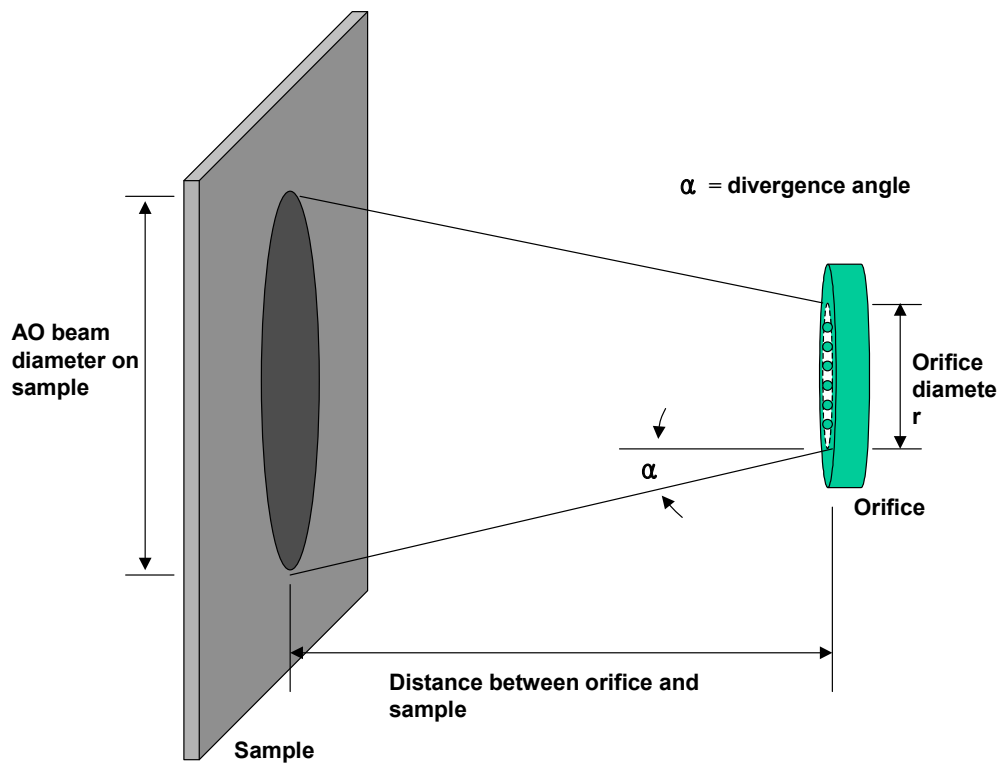


Fig. 5. J. H. Han and C. G. Kim

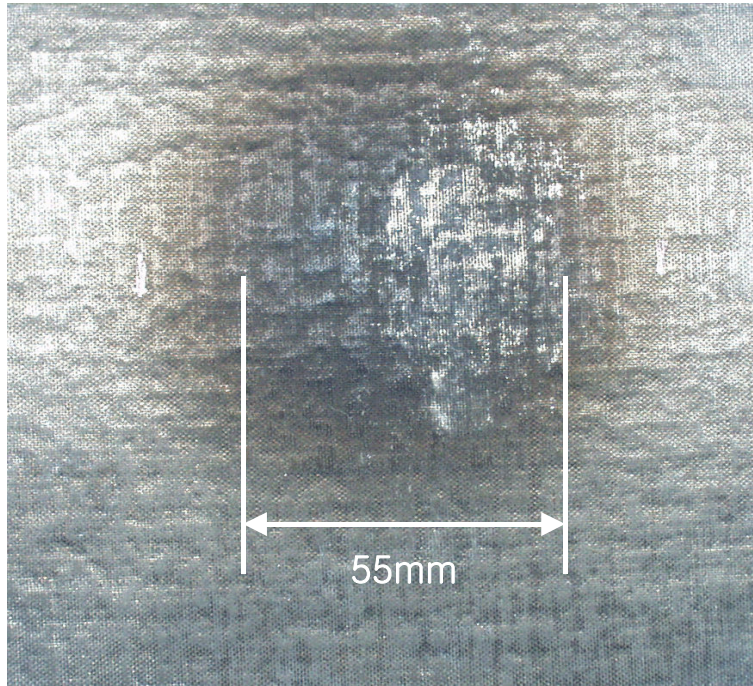


Fig. 6. J. H. Han and C. G. Kim

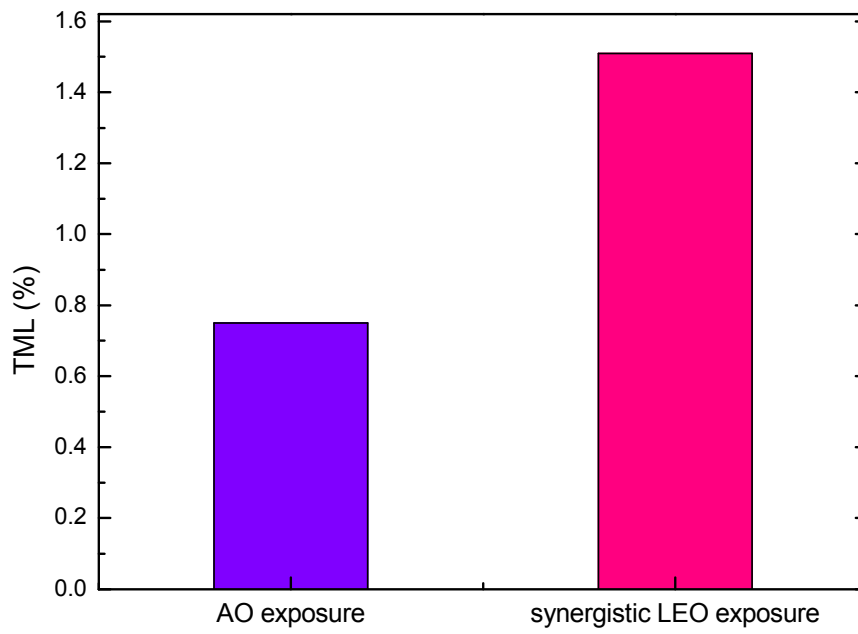


Fig. 7. J. H. Han and C. G. Kim

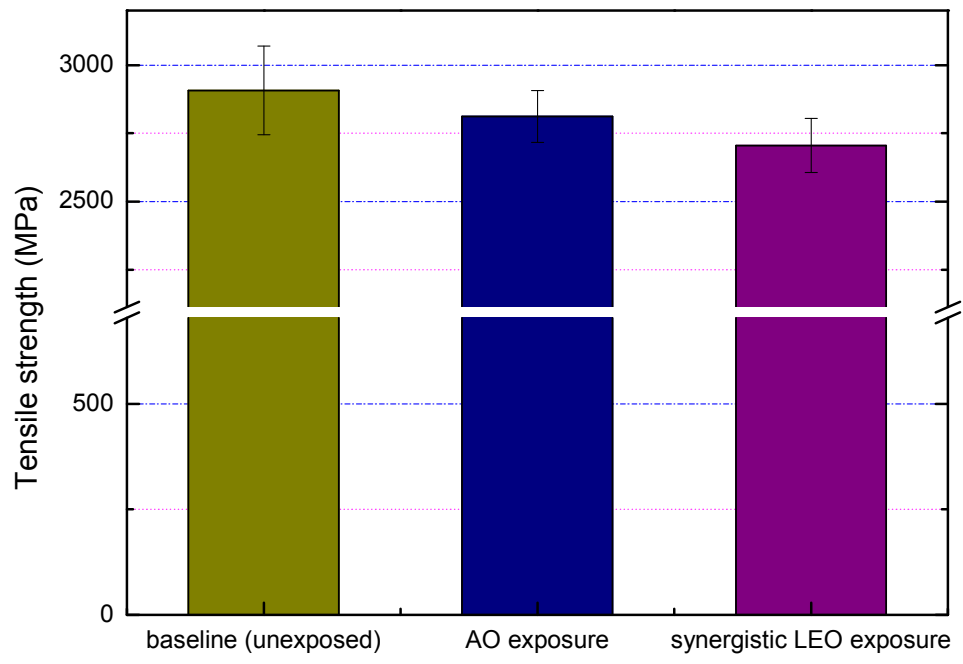


Fig. 8. J. H. Han and C. G. Kim



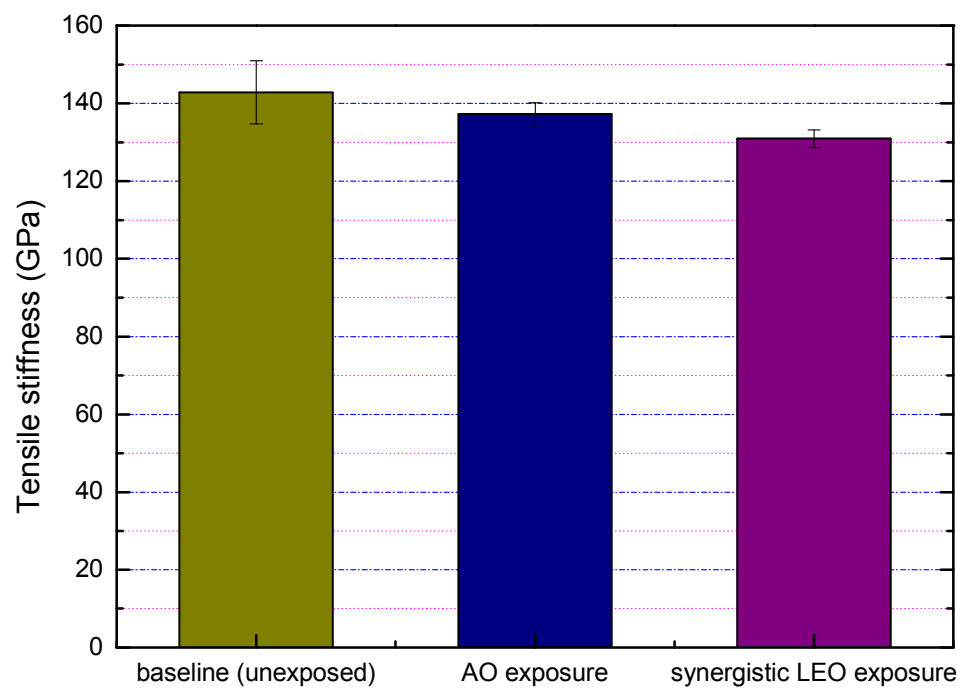
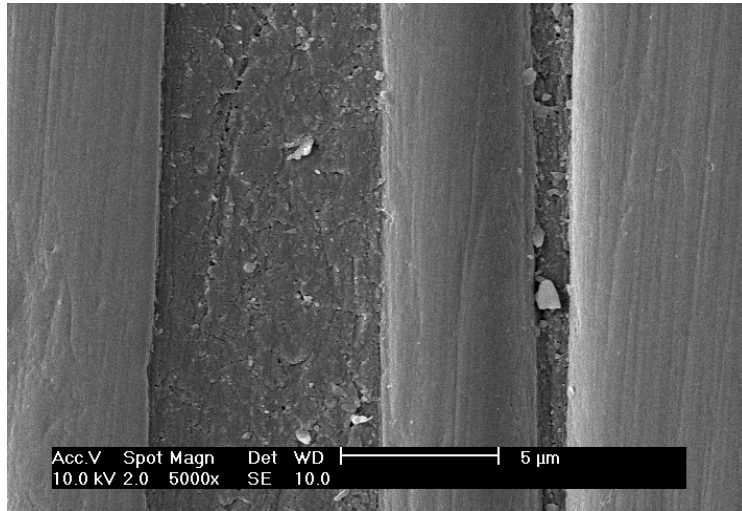
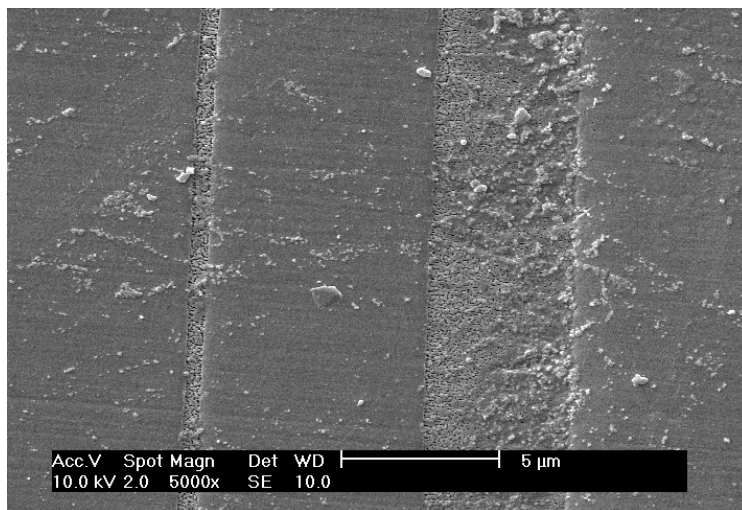


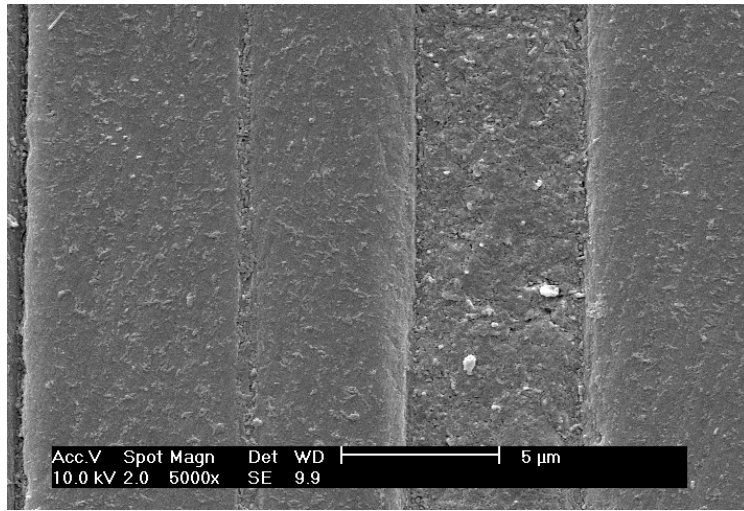
Fig. 9. J. H. Han and C. G. Kim



(a) graphite/epoxy composite specimen unexposed



(b) graphite/epoxy composite specimen exposed to AO



(c) graphite/epoxy composite specimen exposed to the synergistic LEO environment

Fig. 10. J. H. Han and C. G. Kim